

# Technical Data Sheet

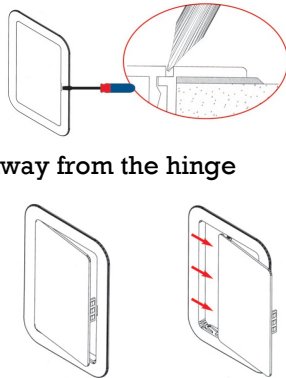
## Plastic Access Panels

### Product



### INSTALLATION

- Cut hole to size, making sure it is straight and level
- Apply silicon or other suitable building grade adhesive to back of plastic frame
- Check which way you want the door to hinge
- Press firmly into place, checking it is straight and level as a twisted frame will effect the door closing correctly.
- Do not operate until adhesive has completely set
- To open door, use flat head screwdriver in slot and lever up
- To remove door, open door slightly and pull away from the hinge position maintaining door at a slight angle. Does not apply to AP110 which is clip fit.
- To replace door, reverse removal process.



### USE

- To provide simple, easy access through dry lined walls, ceilings, ducts and units to gain access to concealed plumbing, switches, valves, stopcocks, fuse boxes, controls and connectors

### FEATURES & BENEFITS

- Purpose made product saves time and money compared with traditional joiner-made products
- Excellent aesthetic appearance
- Factory finished allows painting
- Easy to fit requiring no heavy frame
- Fully removable panel for easier access
- Key lock version available



### Product Details

<b>Product sizes</b>	AP110 - 110 x 160mm (4"x6")
	AP150 - 150 x 230mm (6"x 9")
	AP200 - 200 x 200mm (8"x8")
	AP300 - 300 x 300mm (12"x12")
	AP450 - 450 x 450mm (18"x18")
	Hole fitting size as per dimensions shown except AP450 - 464x464mm

<b>Colour</b>	White plastic textured finish Slight colour variation may occur between size and batch
<b>Material</b>	Door and frame are injection moulded in HIPS/ABS

