

# Technical Data Sheet

## 1HR Fire Rated Deep Frame Access Panels

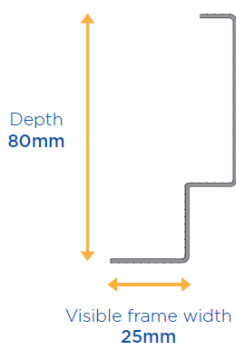
### Product



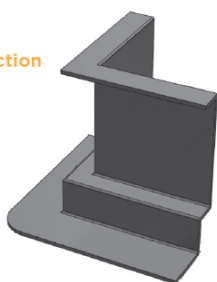
### INSTALLATION

Please note if timber is used to trim the structural opening, a layer of plasterboard or similar must be used to protect the timber frame. In the event of a fire this will prevent the metal frame transmitting heat to the combustible timber.

- Prepare a clear trimmed opening in the structure 5mm larger than the panel size. Do NOT include the visible frame flange in this calculation. Flange covers the edge of opening
- Unlock door with key provided and remove door panel from frame
- Offer up frame and press firmly into place checking it is flush and square
- Check which way you want the door to hinge
- Screw fix using suitable fixings through the pre-drilled holes to all four sides of the frame, ensuring no distortion takes place
- Replace door, close and lock panel.
- Fill any gaps between the frame with decorators caulking or suitable filler



Frame construction



### USE

- 1 hour fire rated robust mild steel access panel
- To provide simple, easy access through dry lined walls, ceilings, ducts and units to gain access to concealed plumbing, switches, valves, stopcocks, fuse boxes, controls and connectors

### FEATURES & BENEFITS

- 1 hour fire rated metal access panel available in both picture frame
- 80mm frame suitable for deeper wall and ceilings
- Independently tested by Warrington fire
- Mineral wool insulation and draught stripped to reduce air leakage in application
- Ideal solution for meeting all gas safety inspection access requirements
- Flush fitting door panels that can be fully removed for maximum access
- Hinge door panels with square T-key lock mechanism
- Quick and easy to install with universal door handle
- Key lock available on request

### Product Details

Product sizes	CODE	SIZE
	IFRD55	555 X 555mm
	IFRD60	605 x 605mm
	IFRD69	605 x 905mm
	IFRD90	905 x 905mm
	IFRD 120	905 x 1205mm
	Frame fitting size as per dimensions	
<b>Acoustic</b>	29dB	

<b>Colour</b>	RAL9016 Polyester powder coated texture finish - white
<b>Material</b>	Electro galvanised mild steel

