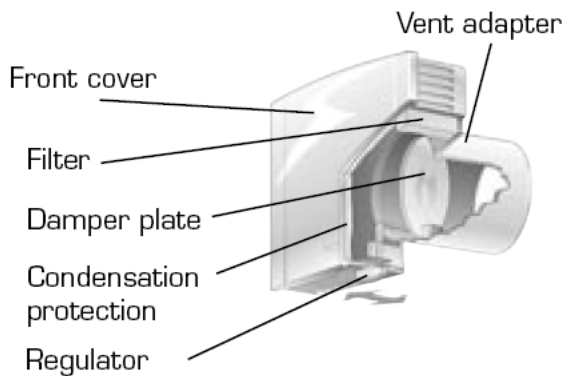
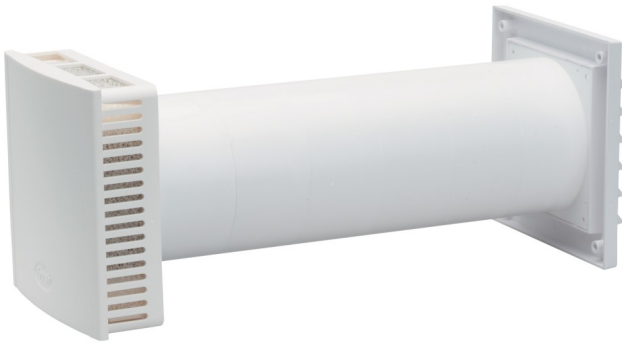


Technical Data Sheet

Fresh 90 & 90dB Wall Vent

Product



INSTALLATION

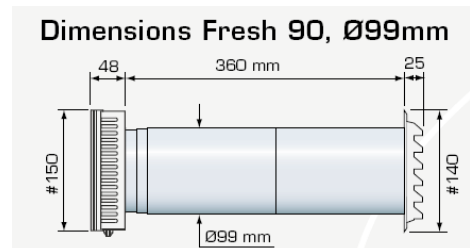
- Place vent as high as possible at least 10cm below ceiling, preferably above radiator
- Check for services before drilling
- Use core drill with minimum dim $\varnothing 102\text{mm}$ for Fresh 90 & $\varnothing 150\text{mm}$ for Fresh 90dB
- Drill hole so pipe slopes slightly downwards
- If wall thickness is less than 300mm pipe can be cut to required length, if over additional pipes may be required
- Seal pipe both inside and outside with a suitable sealant agent
- Mechanically fix external grille into place
- Remove internal vent housing and fix with 4 screws
- Attached front cover and check vent is fully operational
- Wash filter 1-2 times per year.

FEATURES & BENEFITS

- Square shaped wall vent for continuous draught free and filtered airflow
- Supplied with standard dust and insect filter
- Front cover insulated from condensation and sound penetration
- Unique air distribution pattern
- Minimum air flow settings
- Easy to clean and install
- Also available in sound reduction model (Fresh 90dB)
- Telescopic pipe for flexibility
- Wide range of storm and filter accessories available

Product Details

Free Area	6000mm ²
Wall opening	Fresh 90 - 102mm diameter Fresh 90 dB - 150mm diameter
Maximum thickness	Fresh 90 - 350mm Fresh 90dB - 300mm
Size	External grille - 140 x 140mm Internal grille - 150x150x48mm



Colour	White RAL9010
Code	Fresh 90

