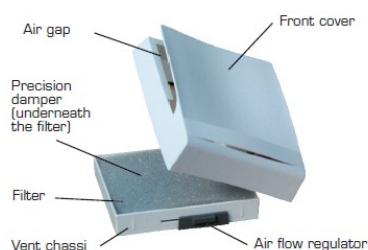
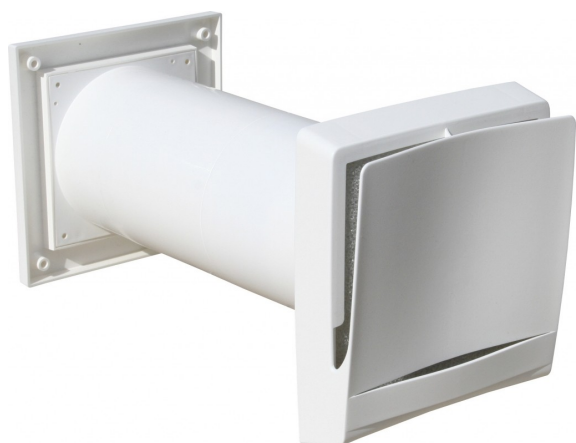


Technical Data Sheet

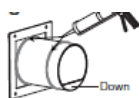
Fresh TL98F Wall Vent

Product



INSTALLATION

- Place vent as high as possible at least 10cm below ceiling, preferably above radiator
- Check for services before drilling
- Use core drill with minimum dim $\varnothing 102\text{mm}$ for TL98F & $\varnothing 125\text{mm}$ for TL80FdB
- Drill hole so pipe slopes slightly downwards
- If wall thickness is less than 300mm pipe can be cut to required length, if over additional pipes may be required
- Seal pipe both inside and outside with a suitable sealant agent
- Mechanically fix external grille into place. In areas of high exposure replace external grille with Tyfon grille or storm cover.
- Remove internal vent housing and mechanically fix with 4 screws. Set the required opening with the control.
- Attached front cover and check vent is fully operational
- Wash filter 1-2 times per year with mild soap solution.

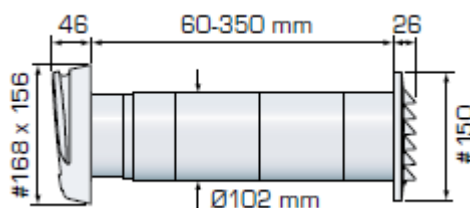


FEATURES & BENEFITS

- Designer shaped wall vent for continuous draught free and filtered airflow
- Supplied with standard dust and insect filter
- Front cover insulated from condensation and sound penetration
- Unique air distribution pattern
- Precision damper is adjustable by a regulator with a 1-10 scale located behind the front cover.
- Easy to clean and install
- Also available in sound reduction model (TL80FdB)
- Telescopic pipe for flexibility
- Wide range of storm and Allergy filter accessories available
- Locate vent high on the wall above radiators.
- Designed to work with underfloor heating.

Product Details

Free Area	6000mm ²
Wall opening	TL98F - 102mm diameter TL80FdBs - 124mm diameter
Maximum thickness	TL98F - 350+60mm TL80dB - 400mm
Size	External grille - 150 x 150mm Internal grille - 156x168x46mm



Colour	White RAL9010
Code	TL98F TL80FdBs (acoustic)

