

# Technical Data Sheet

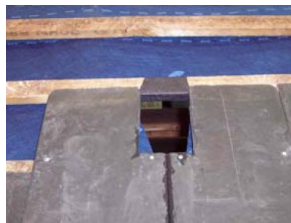
## Small Slate Ventilator

### PRODUCT

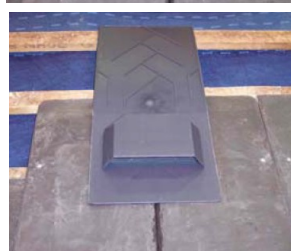


### INSTALLATION

1. Position slate vent and cut a hole in underlay. Fold up the underlay and nail to top of adjacent batten. Position the two lower slates and trim to allow 8.5mm diameter pipe to pass through.



2. Position the slate vent through the hole in the slate and underlay and centre nail to batten. If using 500x250mm slates cut away the side sections of the slate vent shown by guidelines on the underside.



3. Continue laying the slates as normal. The two slates above the vent cap may require the corners to be trimmed around the pipe, dependent on the headlap.



### USES

- For slate roof ventilation or soil vent pipes or mechanical extract ventilation (with accessories)
- For remedial work on existing roofs with man-made or natural slates
- Suitable for roof pitches between 20° and 70°
- For use at high level or low level where the roof construction does not allow eaves or ridge vents

### FEATURES & BENEFITS

- Economical general purpose low profile cowl vent
- Can be installed as required during slating process
- Efficient, unobtrusive and easy to install
- Slate grey cap blends with most natural and man-made slates
- Clearly marked for cutting to various slate sizes
- Prevents entry of birds and large insects
- No adaptor required to convert to soil ventilation or mechanical extraction using 75/100mm flexipipe
- Complies with current Building Regulations; BS5250 & BS5534, ICP2

### Product Details

<b>Free Area</b>	4,500mm <sup>2</sup> per vent
<b>Size</b>	600x300mm wide x 75mm deep ) including downpipe)
<b>Material</b>	Rigid PVC

<b>Colour</b>	Slate grey - 972200 Matt finish Black - 972276 Flexi pipe - 972400
---------------	--

<b>Suggested spacing</b>	5000mm <sup>2</sup> /m = 0.9m 10 000mm <sup>2</sup> /m = 0.45m
<b>Airflow resistance when used as SVP</b>	15 lt/sec    22Pa 30lt/sec    88Pa 60lt/sec    352Pa

