

Technical Data Sheet

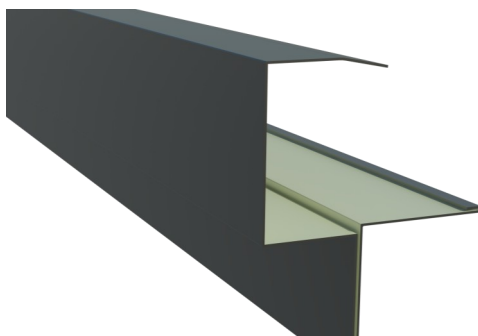
Dry Verge Trim for Tile (No 2)

PRODUCT



Product Description

Description	Colour	Code
Tile edge trim 50mm	Black, Brown	DVTE250
Tile edge trim 70mm	Black, Brown	DVTE270



INSTALLATION

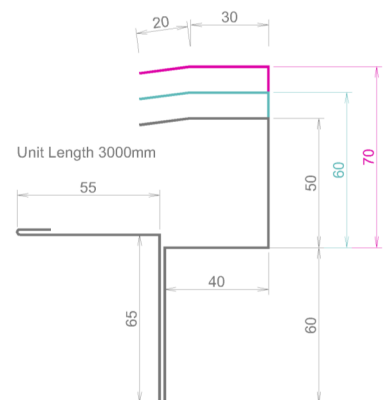
Nail slate trim through flange into batten. Where tile trim intersects at ridge and eaves cut with hand snips (do not cut with grinder). Interlock trims for verges greater than 3m long

USES

- 3m continuous dry verge trim provides a seamless neat dry verge every time
- Suitable for use with any concrete or clay roof tile installation
- Eliminates the need for pointing any gables
- Designed to withstand the harshest climates with a high resistance to corrosion and abrasion and can be installed in any weather

FEATURES & BENEFITS

- Provides full wind uplift and weather protection to the verge of a roof
- Mechanically fixed with no maintenance required
- Quick and easy to install with no special skills or tools required for installation
- Compatible with all tiled roofing
- Compatible with all mortar or dry fixed ridge systems
- Available in 50 or 70mm deep profile trim
- Meets requirements of BS5534 and ICP2 for mechanical fixing
- UV and heat resistant
- Prevents entry of birds and large insects
- Unaffected by differential movement or settlement
- Tougher than aluminium products, preventing unnecessary damage on site
- Patented 5mm drop on large edge version helps avoid seepage and damage to the roof
- Galvanised



2273 - CPR - 0485

