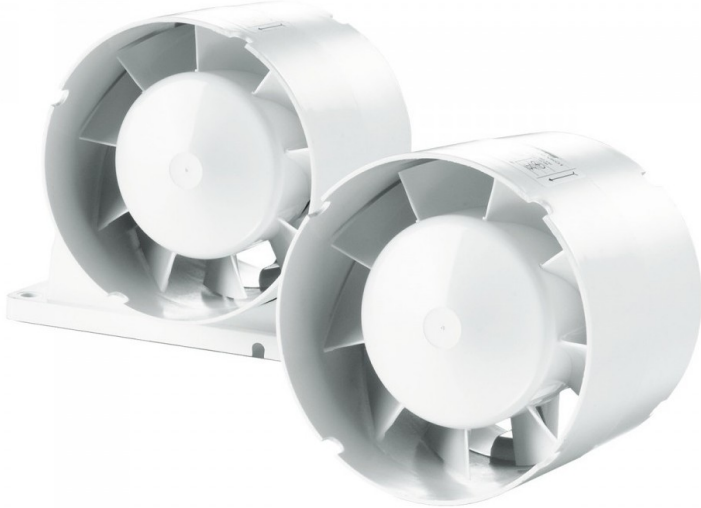


VK01 Inline Series

Axial in-line fan for exhaust or supply
with air capacity up to 365m³/h

Product



USES


- Continuous or periodic exhaust ventilation for wet rooms
- Compatible with Ø100, 125 and 150mm air ducts
- Low to medium air flow motion for short distances at low air resistance


FEATURES & BENEFITS


- Casing and impeller made of high quality durable ABS plastic and are UV resistance
- The impeller design makes the fan highly efficient and offers a long service life
- Reliable low wattage motor designed for continuous operation
- Fan is controlled by room light switch
- Fan fitted horizontally or vertically with mounting bracket and connected to sized ducting


MODIFICATIONS & OPTIONS


VK01K- The fan is equipped with fixing brackets for flat surface mounting

 **VK01L** - The motor is equipped with ball bearings for long service life (approx. 40,000 hrs). The bearings are maintenance free and contain enough grease for the entire operating period

 **VK01 Turbo** - high powered motor

 **VK01 press** - 5 blade low noise impeller with improved aerodynamics for higher fan capacity

 **VK01 12** - modification with low voltage motor

 **VK01 T** - equipped with a regulator timer with operating time from 2 to 30 min



DIMENSION

MODEL	Dimension (mm)							
	ØD	B	B1	H	L	L1	L2	L3
VK0110k(100mm)	100	160	144	110	85	28	45	29
VK0125k(125mm)	125	185	169	125	90	28	45	29
VK0150 k(150mm)	150	200	184	162	100	28	45	29

TECHNICAL DATA

MODEL	Voltage (V) at 50 Hz	Power Consumption (W)	Current (A)	Maximum air capacity (m ³ /h)	Sound Pressure Level at 3m (dB (A))	Weight (kg)	r.p.m
VK0110k	220-240	14	0.085	107	36	0.41	2300
VK0110k	220-240	16	0.10	190	38	0.43	2400
VK0110k	220-240	30	0.13	305	40	0.80	2400

